

Friday 15 October 2021 – Morning

A Level Biology B (Advancing Biology)

H422/02 Scientific literacy in biology

Time allowed: 2 hours 15 minutes



You must have:

- a clean copy of the Advance Notice Article (inside this document)

You can use:

- a ruler (cm/mm)
- a scientific or graphical calculator



Please write clearly in black ink. **Do not write in the barcodes.**

Centre number

--	--	--	--	--

Candidate number

--	--	--	--

First name(s)

Last name

INSTRUCTIONS

- Use black ink. You can use an HB pencil, but only for graphs and diagrams.
- Write your answer to each question in the space provided. If you need extra space use the lined pages at the end of this booklet. The question numbers must be clearly shown.
- Answer **all** the questions.
- Where appropriate, your answer should be supported with working. Marks might be given for using a correct method, even if your answer is wrong.

INFORMATION

- The total mark for this paper is **100**.
- The marks for each question are shown in brackets [].
- Quality of extended response will be assessed in questions marked with an asterisk (*).
- This document has **28** pages.

ADVICE

- Read each question carefully before you start your answer.

Answer **all** the questions.

1 This question is based on the Advance Notice article ‘**Do Pathogens Gain Virulence as Hosts Become More Resistant?**’ on the **Insert**.

(a) The myxoma virus (MYXV) is a pathogen that causes myxomatosis in its hosts.

(i) Describe how a virus replicates.

.....
.....
.....
.....
..... [2]

(ii) Explain why myxomatosis could not be described as endemic in Australia before 1950.

.....
.....
..... [1]

(iii) Explain why the myxomatosis outbreak in the 1950s could be described as an epidemic.

.....
..... [1]

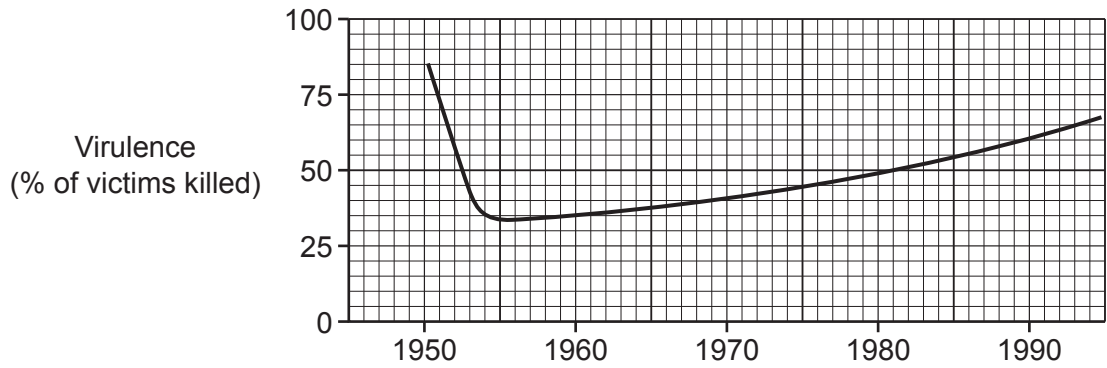
(b) HIV is a retrovirus but MYXV is not.

Use this information and your knowledge to complete the following table by placing a tick (✓) if the feature is found in HIV or MYXV.

Feature	HIV	MYXV
Genetic material is RNA		
Virus particle contains reverse transcriptase		
Virus has a protein capsid		

[3]

(c) The graph shows how the virulence of MYXV changed over the period from 1950 to 1990.



Describe how the virulence of MYXV strains varied during the period 1950 to 1990.

.....

.....

.....

.....

..... [2]

(d) The article describes the interactions between pathogen virulence and host resistance to infection.

(i) Explain how immunological and genetic factors would allow a population of wild rabbits to become more resistant to infection by MYXV.

.....

.....

.....

.....

..... [2]

- 2 (a) The faecal occult blood test (FOBT) is a screening method that is now used routinely in people over the age of 65 years.

The presence of blood in faeces (a positive result) is thought to be caused by chronic inflammation of the gut and indicates an increased risk of developing colorectal cancer (CRC).

A Scottish study looked at 133921 individuals who were tested with FOBT and then followed for up to 16 years.

- 131207 had a negative FOBT
- 2714 had a positive FOBT

- (i) Outline a method that a doctor could use to confirm that a person with a positive FOBT has CRC.

.....

.....

.....

.....

.....

..... [2]

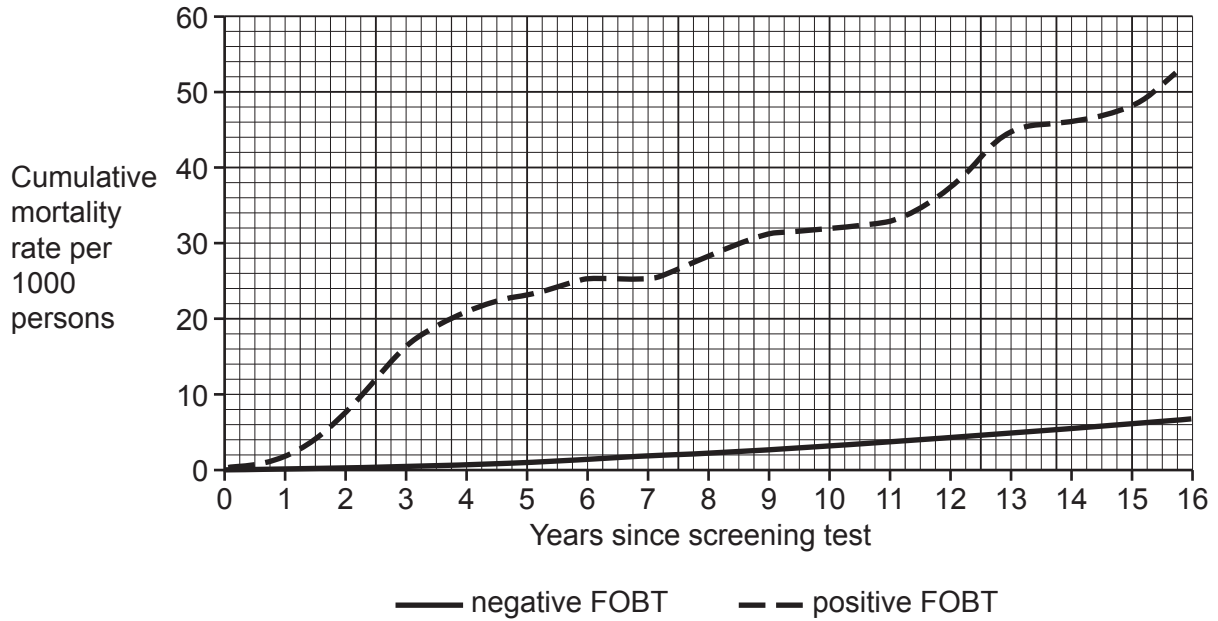
7
BLANK PAGE

PLEASE DO NOT WRITE ON THIS PAGE

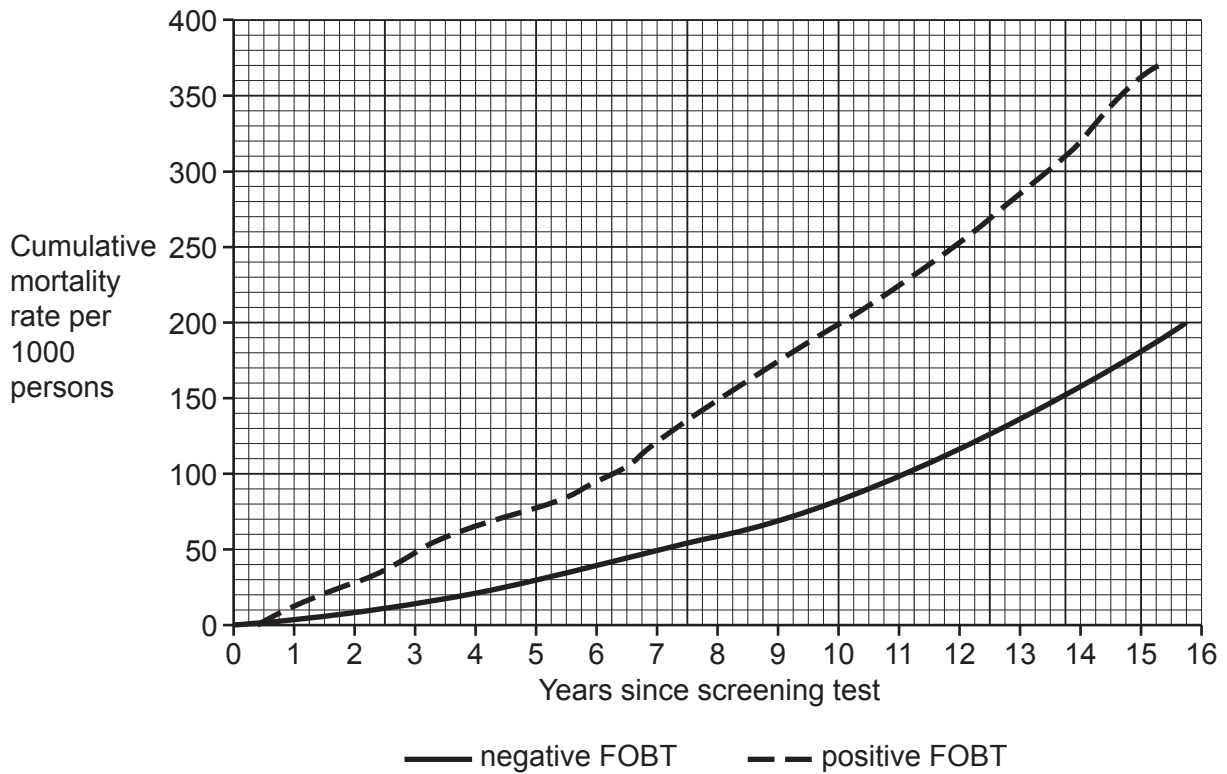
Question 2(a)(ii) begins on page 8

(ii) The graphs show cumulative mortality rate from CRC and cumulative mortality rate from all causes except CRC in the two groups studied over the 16-year period.

Cumulative mortality rate from CRC



Cumulative mortality rate from all causes except CRC



- 3 (a) Fig. 3.1 is a diagram of a section through the human brain.

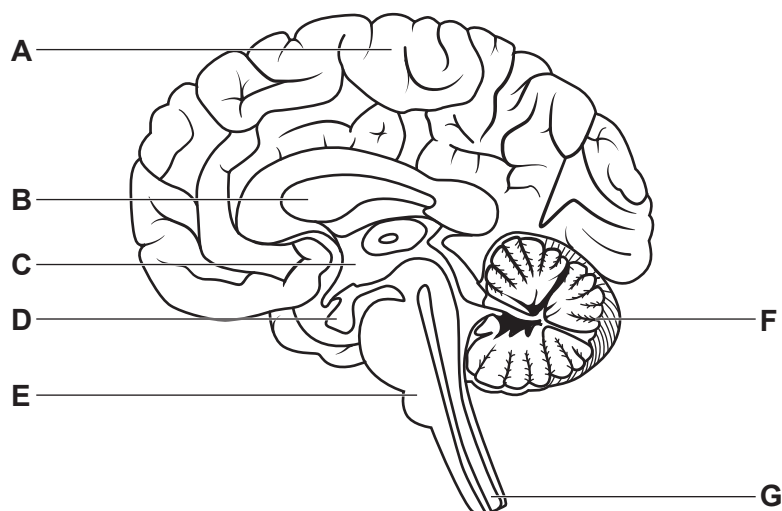


Fig. 3.1

The following table contains statements about areas of the brain shown in Fig. 3.1.

Complete the table using the most appropriate letter from Fig. 3.1. Each letter may be used once, more than once, or not at all.

Statement	Letter
fMRI shows this area of the brain to be active when playing a musical instrument.	
Temperature-sensitive neurones are located in this area of the brain.	
Traumatic injury to this area can lead to over- or under-production of sex hormones.	
This region of the brain controls heart rate and breathing rate.	
Stroke affecting part of this area of the brain could cause loss of conscious control of muscles in the arms or legs.	

[4]

- (b) The brain contains the structures responsible for coordination of the control of body temperature.

An 80-year-old man was found in an unheated room when the outside temperature was below 0°C. The man had a weak pulse. A paramedic measured the man's core body temperature as 34.2°C.

- (i) Explain how the paramedic could obtain an accurate measurement of core body temperature.

.....

.....

.....

.....

..... [2]

(c) Fig. 3.2 shows monthly data for the treatment of cases of hypothermia (Fig. 3.2a) and hyperthermia (Fig. 3.2b) in the United States over a two-year period.

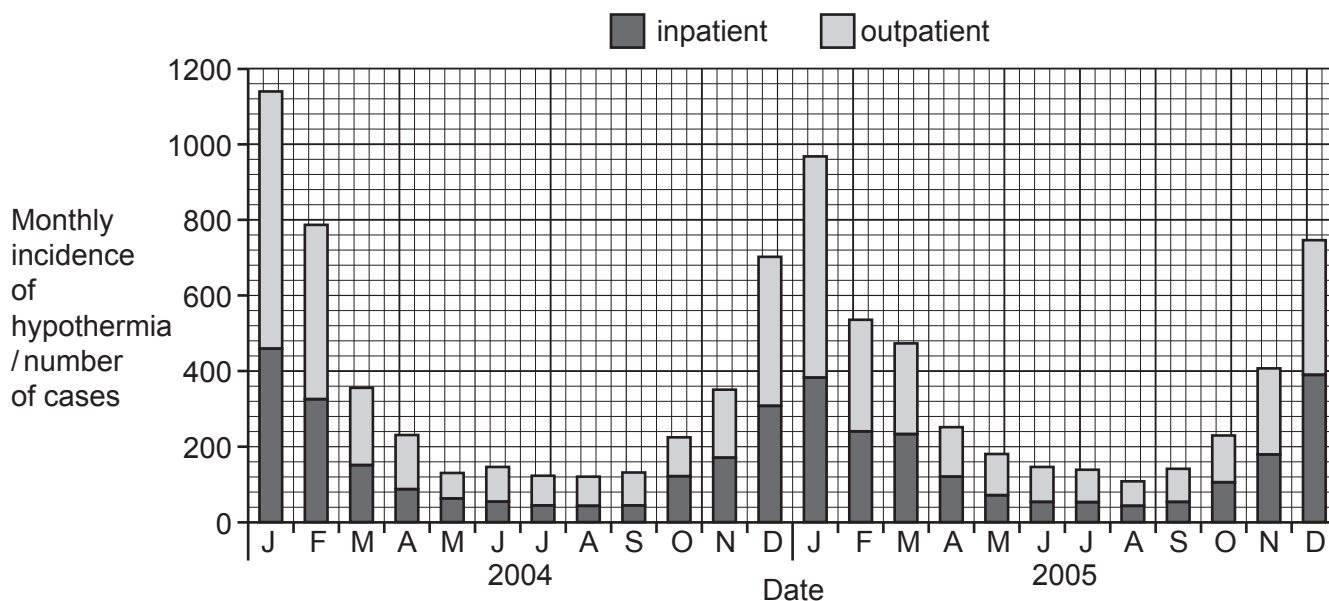


Fig. 3.2a

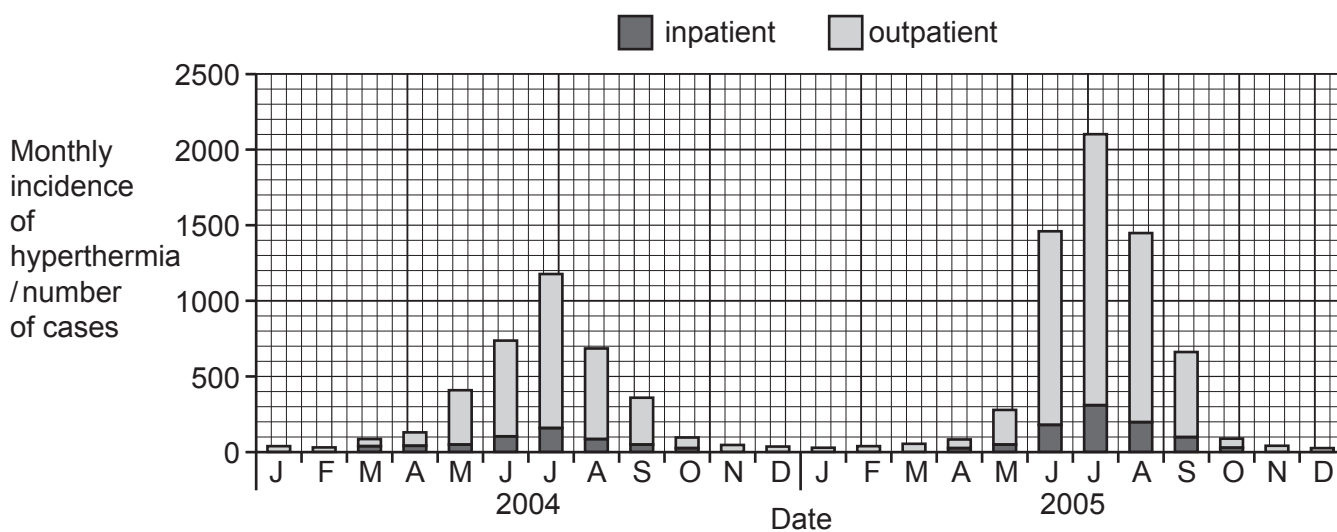


Fig. 3.2b

Some patients were treated as outpatients in a clinic or Emergency Department. Others required admission to hospital as inpatients.

- (ii) Explain why the experiments you have described should be carried out with excess enzyme.

.....
..... [1]

- (iii) The Michaelis constant, K_M , is defined as the substrate concentration that gives half the maximum reaction rate ($\frac{1}{2} V_{max}$).

Use **Fig. 4.1** to obtain a value for K_M for this enzyme, including units.

$K_M = \dots\dots\dots$ units $\dots\dots\dots$ [2]

- (iv) Suggest why it is often difficult to determine a value for V_{max} experimentally.

.....
.....
.....
.....
..... [2]

- (b) Because of the difficulty in determining a value for V_{\max} , a double reciprocal plot can be used instead.

To prepare this plot, the rate of reaction, V , is measured at different substrate concentrations, $[S]$.

Then, a plot of $1/V$ against $1/[S]$ is made, as shown in **Fig. 4.2**.

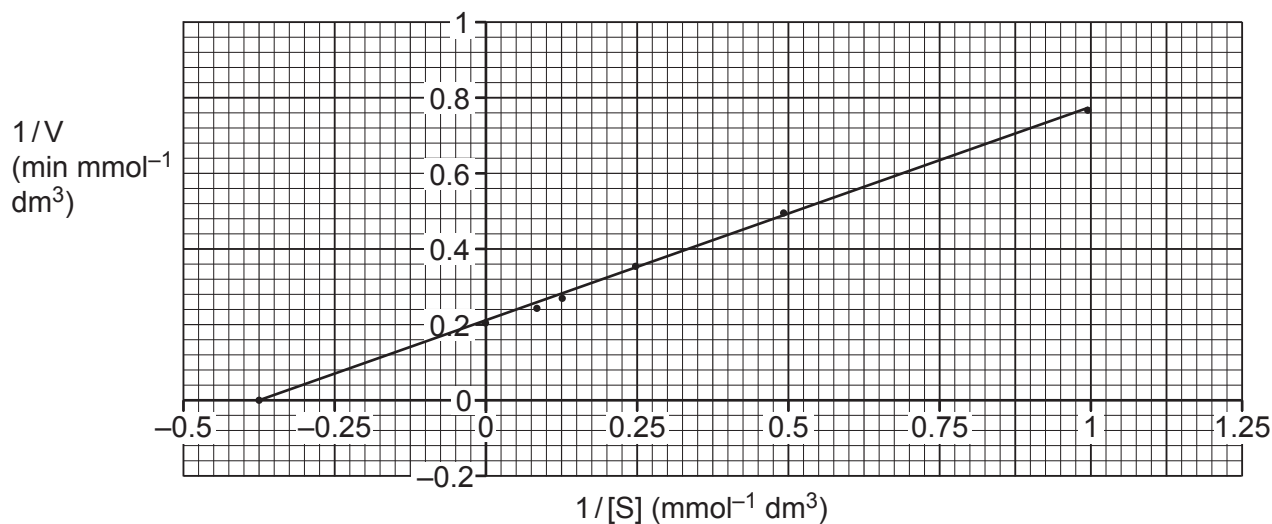


Fig. 4.2

The equation for the graph in **Fig. 4.2** is:

$$\frac{1}{V} = \frac{K_M}{V_{\max}} \times \frac{1}{[S]} + \frac{1}{V_{\max}}$$

This equation is of the form $y = mx + c$ where

- $1/V$ represents y
- K_M/V_{\max} represents m
- $1/[S]$ represents x
- $1/V_{\max}$ represents c

The double reciprocal plot therefore produces a straight line graph.

- (i) Use **Fig. 4.2** to determine the gradient of the line.

Gradient = [1]

- (ii) Write an expression that connects the gradient of the line, K_M and V_{\max} .

..... [1]

- (iii) A student used **Fig. 4.2** to determine that $V_{\max} = 5$.

Use this value and your answer to part (i) to determine K_M for this enzyme.

$K_M = \dots\dots\dots$ (units not required) [2]

5 (a) The following passage describes aspects of epigenetics.

Complete the passage using the most appropriate terms.

A mutation causes a change in the nucleotide sequence of DNA. Epigenetic changes do not change the nucleotide sequence. Instead, they change the extent to which genes are

One epigenetic mechanism involves acetylation of, which makes the genes more accessible. Another mechanism involves of the DNA.

Some epigenetic changes can be inherited if they are present in [4]

(b) Twenty zebrafish were exposed to hypoxia (oxygen deprivation) by keeping them in water with a low oxygen concentration for 4 weeks.

All the offspring of these fish had greater resistance to hypoxia than offspring whose parents were kept in well-oxygenated water.

The researchers concluded that this showed evidence for inheritance of epigenetic changes rather than being the result of a mutation.

Evaluate this conclusion.

.....

.....

.....

.....

.....

.....

.....

.....

.....

.....

..... [3]

(c) *Drosophila simulans* and *Drosophila mauritiana* are two closely related species of fruit fly.

The *OdsH* gene in *Drosophila* is described as a speciation gene. It causes epigenetic changes to the DNA that regulates the condensation of chromosomes.

(i) Name the stage of the cell cycle in which condensation of chromosomes occurs.

..... [1]

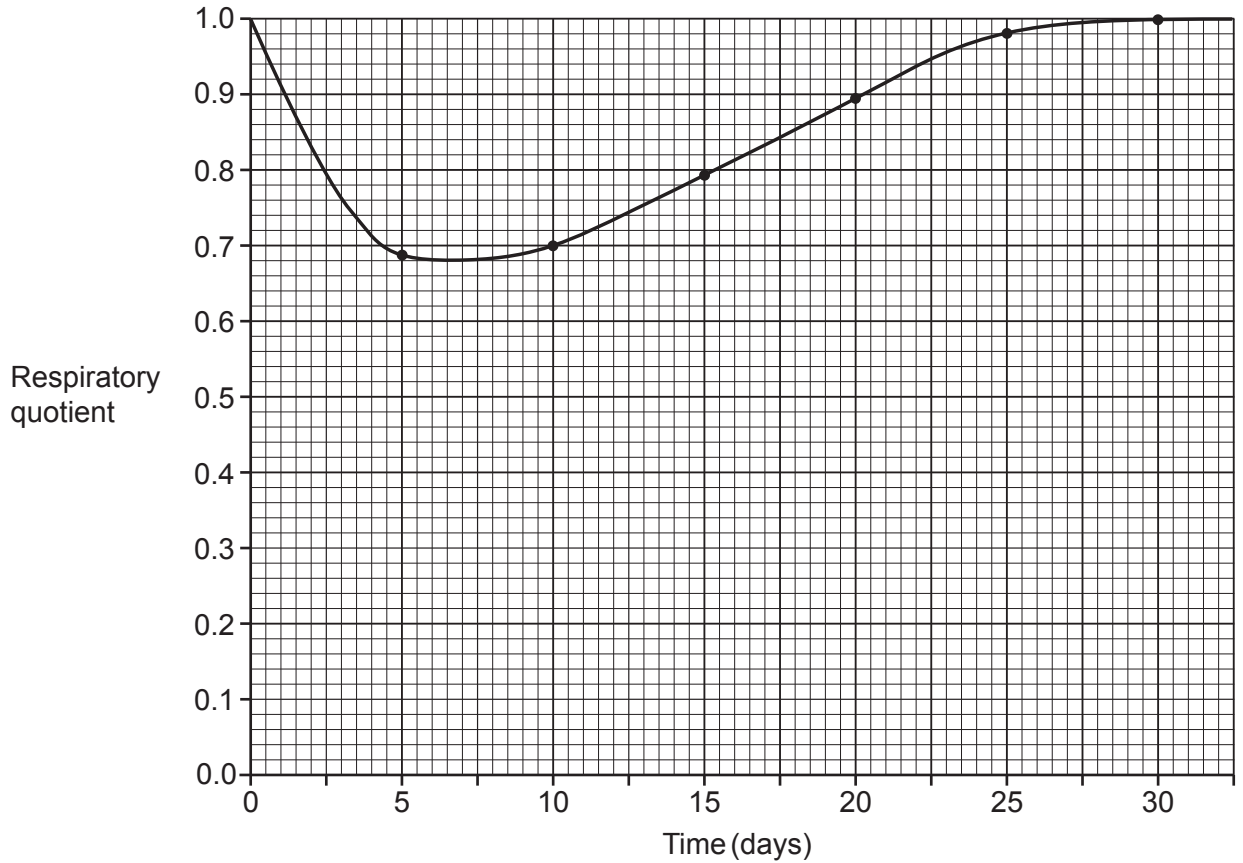
(ii) The *OdsH* gene causes male sterility in *D. simulans* – *D. mauritiana* hybrids.

Based on the information provided, suggest how the *OdsH* gene has caused *D. simulans* and *D. mauritiana* to become and remain separate species.

.....
.....
.....
.....
.....
.....
.....
.....
.....
..... [3]

- 6 (a) Barley is a widely grown cereal in the UK. The production of barley malt involves germinating the barley grains (seeds) and then drying them.

The graph shows the results of an investigation into changes in respiratory quotient (RQ) of barley seeds during the first 30 days of germination.



(i) Name the apparatus that could have been used to measure RQ in this investigation.
 [1]

(ii) Barley grains contain about 12% by mass of storage proteins. A student stated that the graph was evidence that these proteins are used as respiratory substrates throughout germination.

Suggest whether the student's statement is likely to be correct.

 [2]

(iii) Describe how you could extend this experiment to test the student's hypothesis.

.....
.....
.....
.....
..... [2]

(iv) What can you conclude from the graph about the respiratory substrates, other than protein, that are used during germination?

.....
.....
.....
.....
.....
.....
.....
.....
..... [3]

(b) After being used in brewing, spent grain can be used as an animal feed.

Approximately 50% by mass of the fatty acids in spent grain are linoleic acid, $C_{18}H_{32}O_2$.

(i) Calculate the respiratory quotient, RQ, of linoleic acid when respired aerobically.

RQ = [2]

(ii) State the effect on RQ if the linoleic acid were respired by a mixture of aerobic and anaerobic respiration. Explain your answer.

.....
.....
.....
.....
..... [2]

7 (a) Immunity can be categorised as

- active or passive
- natural or artificial.

Complete the following table by putting ticks (✓) in the correct boxes to show whether each example is active or passive **and** natural or artificial.

Example	Active	Passive	Natural	Artificial
Snake antivenoms consist of sheep or horse antibodies to snake venom proteins. They are given to treat snake bite.				
A mixture of proteins purified from the <i>Haemophilus influenzae</i> virus is used to reduce the risk of a person getting the flu.				
Following infection by a pathogen, a person develops memory T and B cells.				
A calf receives antibodies from its mother in colostrum.				

[4]

(b) Scientists investigated the link between breastfeeding in mice and the risk of offspring developing asthma.

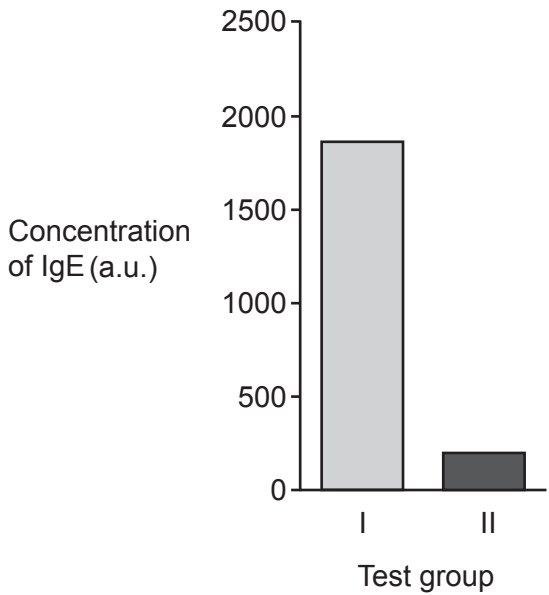
They used a model system of asthma called allergic airway disease (AAD).

Two groups of mice were compared:

- Group I: mice who were born to normal mothers (no AAD) and then breastfed by their own mothers.
- Group II: mice who were born to normal mothers but then breastfed by foster mothers with AAD.

After 4 weeks the offspring were exposed to a protein to induce AAD.

The concentration of IgE in the blood of the offspring was determined. IgE is a type of antibody that increases in concentration during allergic reactions. The results are shown in the graph.



(i) Name a statistical test the scientists could have used to compare the results of the two groups. Give a reason for your choice.

.....

.....

.....

.....

..... [2]

(ii) State which group of offspring showed more AAD. Give a reason for your choice.

.....
.....
.....
.....
..... [2]

(iii) The statistical analysis showed there was a significant difference in the concentrations of IgE antibodies in the two groups.

Breastfeeding is associated with a reduced risk of asthma in children.

Explain whether the results support the conclusion that breastfeeding could reduce the risk of asthma in children.

.....
.....
.....
.....
.....
.....
.....
.....
..... [3]

END OF QUESTION PAPER

ADDITIONAL ANSWER SPACE

If additional space is required, you should use the following lined page(s). The question number(s) must be clearly shown in the margin(s).

A large rectangular area with a vertical solid line on the left side and horizontal dotted lines across the rest of the page, providing space for writing answers.



Copyright Information

OCR is committed to seeking permission to reproduce all third-party content that it uses in its assessment materials. OCR has attempted to identify and contact all copyright holders whose work is used in this paper. To avoid the issue of disclosure of answer-related information to candidates, all copyright acknowledgements are reproduced in the OCR Copyright Acknowledgements Booklet. This is produced for each series of examinations and is freely available to download from our public website (www.ocr.org.uk) after the live examination series. If OCR has unwittingly failed to correctly acknowledge or clear any third-party content in this assessment material, OCR will be happy to correct its mistake at the earliest possible opportunity.

For queries or further information please contact The OCR Copyright Team, The Triangle Building, Shaftesbury Road, Cambridge CB2 8EA.

OCR is part of the Cambridge Assessment Group; Cambridge Assessment is the brand name of University of Cambridge Local Examinations Syndicate (UCLES), which is itself a department of the University of Cambridge.