

Support highlights

We know teaching has been greatly disrupted in 2020, so to support you we've collated together some of our most useful resources below for you. We've tried to highlight resources that can help with establishing or consolidating student knowledge, as well as resources that reinforce particular essential skills for students. This is designed to remind you of resources that could help save you time, enabling you to quickly get back up to speed in the classroom and support your students in preparing for exams. Many more resources are available from the [OCR website](#).

Delivery Guides

[View our full range of delivery guides](#)

We have lots of online Delivery Guides for different topics in our AS/A Level English Literature course. We have guides for many of our key pre-1900 drama and poetry texts, as well as sections for each synoptic topic in Component 2, as well as modern plays for the AS Level. Each guide is designed to offer a holistic overview of the topic, identify misconceptions where necessary, and identify ways to think contextually. They also point towards some possible student-facing activities with linked resources and teacher notes.

You can use these to form your planning of a learning sequence or provide some of the learner resources as consolidatory or exploratory activities for students. You may also wish to set students note taking exercises using the information provided in a particular delivery guide as a way to consolidate or develop knowledge.

Unseen extracts for Component 2 Teacher guide

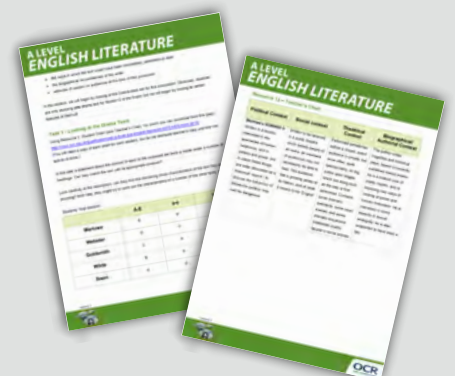
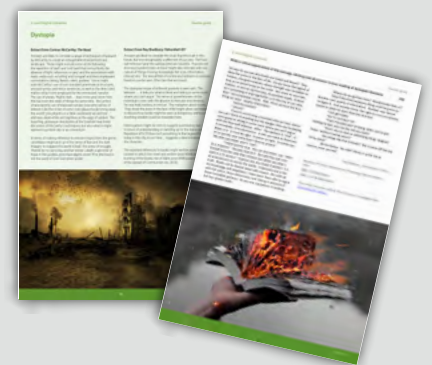
[Download the Teacher guide](#)

This resource provides some extracts from our suggested text choices for Component 2 as a way to develop unseen extract skills. These extracts are shortened, with the option to extend them with appropriate sourcing and are designed to offer some snapshot practice at working with unseen texts from a genre or period of study. Beyond using these in practicing the writing of unseen extract analysis, you could also encourage students to work in groups or pairs to develop their own indicative content for the passage provided before comparing with the indicative content provided at the end of the resource.

Using contextual information at A Level Lesson element

Download the [Teacher instructions](#) and [student activity](#).

These resources are designed to help clarify and expand student understanding of context (AO3). This is something we've talked about in our examiners' reports as well as a blog (see later in this resource), but this resource seeks to encourage students to think more deeply about what could be considered context. This resource focuses particularly on Component 1 but has strategies that can be developed and furthered through either teacher guidance or student research for Component 2.



You may also like

Managing comparison and question choice in Section 2 of Component 1

This resource is about giving [guidance to students in managing and selecting a question](#) in Section 2 of Component 1, offering ways to consider comparison as well as determining the best question for that student to answer.

Literature post-1900: NEA Guide

This resource is a [guide that offers a little more detail about the NEA](#) with advice and examples of task setting, along with FAQs and exemplars with moderator commentary.

Assessment materials

Access past papers, mark schemes and examiners' reports from the [OCR website](#).

New resources to support you

Expanding your NEA Library

This is a new recommendation resource aimed at helping you and your students expand the texts they might explore during the NEA. *Coming soon.*

Professional Development

Exam preparation

Using feedback from the 2019 exams to provide some pointers for student focus ahead of exams in 2021.

Find an event

See our range of professional development courses using the '[Find an event](#)' search tool.

We're now running all our CPD training online rather than face-to-face. Future courses will be in the form of a webinar, offering the same high-quality training as our face-to-face training. If you have any questions, please email professionaldevelopment@ocr.org.uk

Other resources

EMC Making the Leap: From GCSE to A Level English Literature study

As ever, the brilliant English and Media Centre have put together a [free pack all aimed at new Year 12 students](#) in starting their study of A Level English Literature; it's a great way to get students excited about wider reading and offers some great activities to foster independence.

The British Library: Discovering Literature

<https://www.bl.uk/discovering-literature>

RHUL Teacher Hub

Royal Holloway is one of many universities trying to reach out to A Level teachers; they've collated some [excellent resources on popular A Level texts](#) ready for use in the classroom.



Keep connected

A Level English – support for condensing and consolidating

A short [blog that outlines some approaches and activities](#) designed to either diagnose, condense or consolidate student knowledge.

Subject terminology: precision or complication?

This short [blog explains what we mean by subject terminology](#) that may ease some student (and staff) concerns.

Clarifying context in GCSE and A Level English

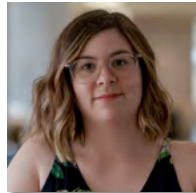
This [blog offers some clarification of what we mean by context](#) and how to develop student's understanding and use of context in responses.

Creative writing in English in exams and in the classroom

A [blog that clarifies our approach to creative writing](#), while offering ways to embed creative writing practice in the classroom.



Get in touch



Isobel Woodger

Subject Advisor for
English

English@ocr.org.uk

01223 553998

[@OCR_English](https://twitter.com/OCR_English)

www.ocr.org.uk

OCR Customer Support Centre

General qualifications

Telephone 01223 553998

Facsimile 01223 552627

Email general.qualifications@ocr.org.uk



OCR is part of Cambridge Assessment, a department of the University of Cambridge. *For staff training purposes and as part of our quality assurance programme your call may be recorded or monitored.*

© OCR 2020 Oxford Cambridge and RSA Examinations is a Company Limited by Guarantee. Registered in England. Registered office The Triangle Building, Shaftesbury Road, Cambridge, CB2 8EA. Registered company number 3484466. OCR is an exempt charity.

