

Support highlights

We know teaching has been greatly disrupted in 2020, so to support you we've collated together some of our most useful resources below for you. We've tried to highlight resources that can help with establishing or consolidating student knowledge, as well as resources that reinforce particular essential skills for students. This is designed to remind you of resources that could help save you time, enabling you to quickly get back up to speed in the classrooms and support your students in preparing for exams. Many more resources are available from the [OCR website](#).

Exploring Narrative Topic Pack

Download the [Teacher guide](#) and [Student activity booklet](#)

Our Exploring Narrative topic pack offers three teaching activities to build student understanding and familiarity with narrative construction, style and concepts. Offering two short critical pieces on the building of narratives, this pack offers a sequence that helps students to develop their understanding of the prose style of their studied text, while developing a stylistics approach that will help bolster their skills for studying drama and poetry elsewhere in the course.

Delivery Guides

[View our full range of delivery guides](#)

We have lots of online Delivery guides for different topics in our A Level English Language and Literature course. Each guide is designed to offer a holistic overview of the topic and point towards some possible student-facing activities with linked resources and teacher notes. We have guides for many of our key drama, prose and poetry texts, as well as a section on attitudes and values in language under 'Other resources'.

You can use these to form your planning of a learning sequence or provide some of the learner resources as consolidatory or exploratory activities for students. You may also wish to set students note taking exercises using the information provided in a particular delivery guide as a way to consolidate or develop knowledge.

Teacher Guide to Non-fiction and spoken text anthology

[Download our Teacher guide](#)

This Teacher guide was updated with Version 2 of the anthology and is a practical guide focusing on teaching strategies for spoken and non-fiction texts. It offers some ideas for initial/taster lessons, as well as detailed ideas on exploring selected texts from anthology, and tips on exploring unseen texts. It also features some useful graphic glossaries for key elements of language e.g. lexis, grammar, phonology etc. These are really valuable either for use as introductory resources or for consolidating and testing student understanding of language levels and concepts.





You may also like

Digital copy of anthology for Component 1

Do ensure students are aware we have a [digital copy of the anthology](#) that's readily downloadable and able to be transferred to tablets and devices for use in Kindle or PDFElement.

Component 4 NEA Guide

This [guide offers some reiteration of the NEA rubric](#) as well as advice on task setting and construction and ways in which to consider pairing texts for use in Task 1.

Reading as a writer, writing as a reader activities

This [resource offers some questioning strategies and a creative prompt](#) to help embed the narrative skills necessary for Component 3.

Assessment materials

Access past papers, mark schemes and examiners' reports from the [OCR website](#).

Professional Development

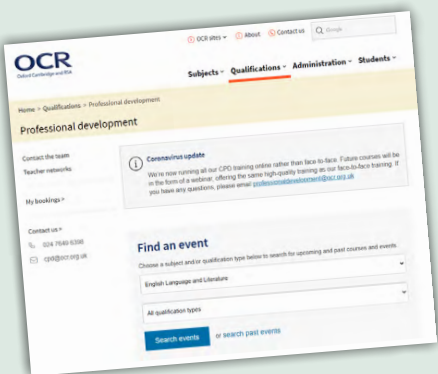
Exam preparation

Using feedback from the 2019 exams to provide some pointers for student focus ahead of exams in 2021.

Find an event

See our range of professional development courses using the '[Find an event](#)' search tool.

We're now running all our CPD training online rather than face-to-face. Future courses will be in the form of a webinar, offering the same high-quality training as our face-to-face training. If you have any questions, please email professionaldevelopment@ocr.org.uk



Publisher materials

English and Media Centre

Language & Literature: An EMC Coursebook (OCR Language & Literature AS/AL EMC) (£24.50)

This [coursebook written by the English and Media Centre](#) offers a detailed overview to the topics and approaches of the combined A Level. Providing you with teaching activities as well as useful explanations for students, it's an excellent resource.



Other resources

The British National Corpus

This is a subdivision of the public audio archive which houses both audio of spoken language and transcriptions; this could be a [useful resource in helping students get to grips with spoken texts](#).

Studying Narrative

This is one of the [EMC's departmental resources](#) that would be valuable for approaching the teaching of narrative in the combined Language and Literature A Level, but would support other qualifications too.



continued on next page

Keep connected

A Level English – support for condensing and consolidating

A short [blog that outlines some approaches and activities](#) designed to either diagnose, condense or consolidate student knowledge.

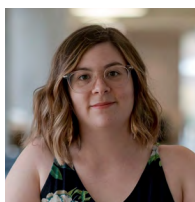
Creative writing in English in exams and in the classroom

A [blog that clarifies our approach to creative writing](#), while offering ways to embed creative writing practice in the classroom.

Clarifying context in GCSE and A Level English

This [blog offers some clarification of what we mean by context](#) and how to develop student’s understanding and use of context in responses.

Get in touch



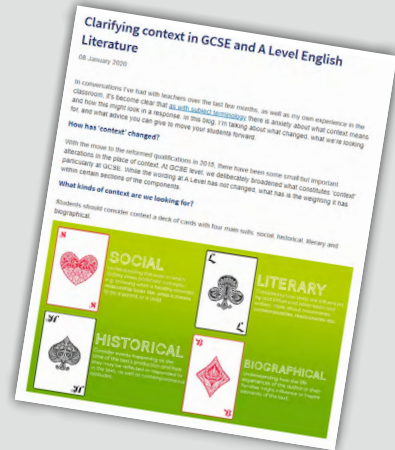
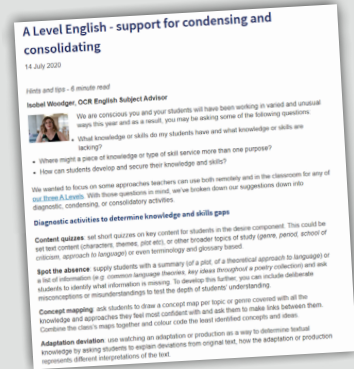
English@ocr.org.uk

01223 553998

[@OCR_English](#)

Isobel Woodger

Subject Advisor for English Language and Literature



www.ocr.org.uk

OCR Customer Support Centre

General qualifications

Telephone 01223 553998

Facsimile 01223 552627

Email general.qualifications@ocr.org.uk



OCR is part of Cambridge Assessment, a department of the University of Cambridge. For staff training purposes and as part of our quality assurance programme your call may be recorded or monitored.

© OCR 2020 Oxford Cambridge and RSA Examinations is a Company Limited by Guarantee. Registered in England. Registered office The Triangle Building, Shaftesbury Road, Cambridge, CB2 8EA. Registered company number 3484466. OCR is an exempt charity.

