

## Support highlights

We've collated links to some of our core resources into this one-stop guide. These highlighted resources will enable you to get up to speed quickly in the classroom and support your students in preparing for assessment. They include materials that will focus your teaching on individual abilities of students, help determine their capabilities and above all save you time. Many more resources are available from the [OCR website](#).

## Topic Exploration Packs

[View all Topic exploration packs](#)

Series of teacher PowerPoints which can be used off the shelf with students. Also, contain links, diagrams and images which make them student friendly and could be used for home schooling as well.

The screenshots below show R041 and some of the content with suggested breakdowns, could be used directly in a lesson by you or a parent or even a student.

## Candidate exemplars

[Download our candidate exemplars](#)

Candidates exemplars with examiner commentary to show what level of work is needed for MB2 and MB3. You can see at a glance what the standard is and it will enable you to mark students work with accuracy.

## OCR train

[Access OCR Train](#)

Work through this online training package to assist you in marking your students' internal assessment accurately. Also contains useful information about admin and dates.

## You may also like

### Exam Builder

[ExamBuilder](#) is the question-building platform for a range of our GCSE, A Level, Cambridge Nationals, Cambridge Technicals and Functional Skills qualifications. You can see the full list of available qualifications on the [sign up](#) page.

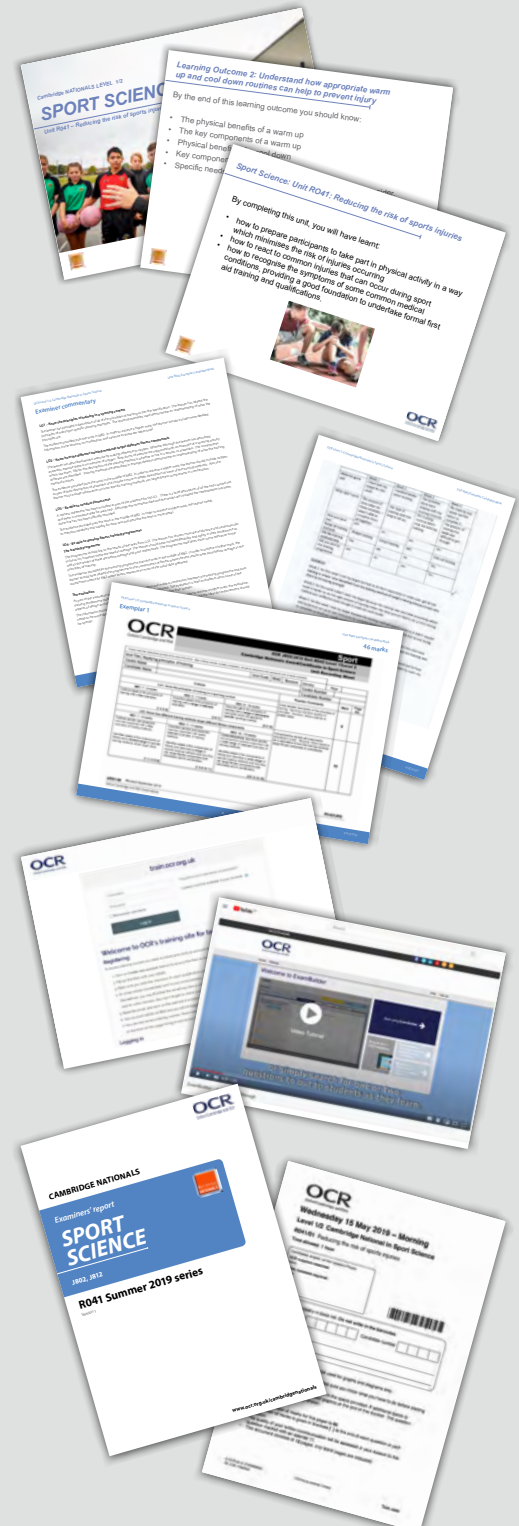
ExamBuilder is **free for all OCR centres** with an Interchange account and gives you unlimited users per centre.

### ExamBuilder Exemplar

[Instructions for how to write your own practice paper](#) on ExamBuilder, with [seven practice tests](#).

### Assessment materials

Access past papers, mark schemes and examiners' reports from the [OCR website](#).





## Professional Development

### Understanding the Assessment: Bring your questions to the subject advisors Cambridge Nationals Sport Studies and Sports Science & Cambridge Technicals Sport and Physical Activity (Online Q&A)

This online course allows you to bring along your Cambridge Nationals Sport Science, Cambridge Nationals Sport Studies and Cambridge Technicals Sport and Physical Activity questions to get answered by the Subject Advisor.

### Understanding Assessment of Internal Units: Making the Grade in Cambridge Nationals Levels 1 and 2 in Sport Science

Building on our existing support and Understanding the Assessment sessions, this event will give you the tools to take your understanding and delivery of the internally assessed units of Cambridge Nationals Sport Science to the next level. The event will explore ways to get more from our resources and discuss relevant areas of the qualification in productive detail.

#### Find an event

See our range of professional development courses using the ['Find an event'](#) search tool.

We're now running all our CPD training online rather than face-to-face. Future courses will be in the form of a webinar, offering the same high-quality training as our face-to-face training. If you have any questions, please email [professionaldevelopment@ocr.org.uk](mailto:professionaldevelopment@ocr.org.uk)

## Publisher materials

### Hodder Education

#### [Cambridge Nationals Level 1/2 Sports Science Textbook](#)

Reinforce classroom learning and strengthen your students' understanding of the content with this Student Book written for the Cambridge National Level 1/2 in Sport Science

Price £22.99

#### [Cambridge Nationals Level 1/2 Sports Science eTextbook](#)

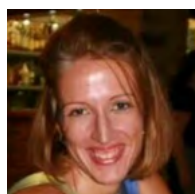
From the classroom to the school bus and beyond, you can now allocate Cambridge National Level 1/2 in Sport Science to your students so they can access it on the move via their phones or tablets.

30-day free trial

## Keep connected

[Sign up](#) for updates to ensure you hear first regarding any changes, updates and additions to the support package.

## Get in touch



*Sara Mallett*



*Mark Johnson*



*Jonathan Varey*

[@OCR\\_PhysEd](#)

[Pe@ocr.org.uk](mailto:Pe@ocr.org.uk)

01223 553998

Subject advisors for Physical Education

**[www.ocr.org.uk](http://www.ocr.org.uk)**  
OCR Customer Support Centre

**General qualifications**

Telephone 01223 553998

Facsimile 01223 552627

Email [general.qualifications@ocr.org.uk](mailto:general.qualifications@ocr.org.uk)



OCR is part of Cambridge University Press & Assessment, a department of the University of Cambridge.

For staff training purposes and as part of our quality assurance programme your call may be recorded or monitored. ©OCR 2021 Oxford Cambridge and RSA Examinations is a Company Limited by Guarantee. Registered in England. Registered office The Triangle Building, Shaftesbury Road, Cambridge, CB2 8EA. Registered company number 3484466. OCR is an exempt charity.

OCR operates academic and vocational qualifications regulated by Ofqual, Qualifications Wales and CCEA as listed in their qualifications registers including A Levels, GCSEs, Cambridge Technicals and Cambridge Nationals.

Cambridge University Press & Assessment is committed to making our documents accessible in accordance with the WCAG 2.1 Standard. We're always looking to improve the accessibility of our documents. If you find any problems or you think we're not meeting accessibility requirements, please [contact us](#).