

OCR

Oxford Cambridge and RSA

Monday 25 June 2018 – Morning

A2 GCE MATHEMATICS

4726/01 Further Pure Mathematics 2

PRINTED ANSWER BOOK

Candidates answer on this Printed Answer Book.

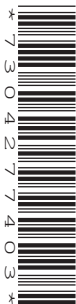
OCR supplied materials:

- Question Paper 4726/01 (inserted)
- List of Formulae (MF1)

Other materials required:

- Scientific or graphical calculator

Duration: 1 hour 30 minutes



Candidate forename		Candidate surname	
-----------------------	--	----------------------	--

Centre number						Candidate number				
---------------	--	--	--	--	--	------------------	--	--	--	--

INSTRUCTIONS TO CANDIDATES

These instructions are the same on the Printed Answer Book and the Question Paper.

- The Question Paper will be found inside the Printed Answer Book.
- Write your name, centre number and candidate number in the spaces provided on the Printed Answer Book. Please write clearly and in capital letters.
- **Write your answer to each question in the space provided in the Printed Answer Book.** If additional space is required, you should use the lined page(s) at the end of the Printed Answer Book. The question number(s) must be clearly shown.
- Use black ink. HB pencil may be used for graphs and diagrams only.
- Answer **all** the questions.
- Read each question carefully. Make sure you know what you have to do before starting your answer.
- Do **not** write in the barcodes.
- You are permitted to use a scientific or graphical calculator in this paper.
- Give non-exact numerical answers correct to 3 significant figures unless a different degree of accuracy is specified in the question or is clearly appropriate.

INFORMATION FOR CANDIDATES

This information is the same on the Printed Answer Book and the Question Paper.

- The number of marks is given in brackets [] at the end of each question or part question on the Question Paper.
- **You are reminded of the need for clear presentation in your answers.**
- The total number of marks for this paper is **72**.
- The Printed Answer Book consists of **16** pages. The Question Paper consists of **4** pages. Any blank pages are indicated.

1 (i)	
1 (ii)	

1 (iii)

--

2 (i)	
2 (ii)	

4 (i)	
4 (ii)	

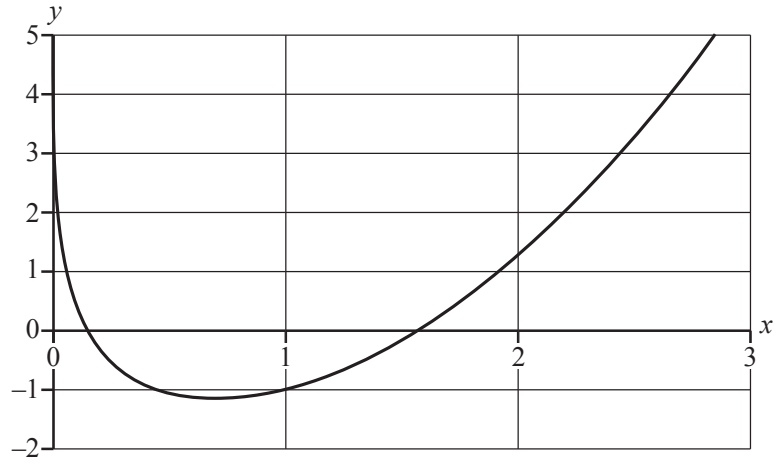
4(ii)	

5	

6(i)	
6(ii)	

6 (iii)	

7 (i)



7 (ii)

7(iii)	

8(i)	
-------------	--

8 (ii)	
8 (iii)	

9(i)	
9(ii)	

9(ii)	

