

## Topic Check In - 7.02 Straight line graphs

Hint: You may wish to draw graphs in some questions.

Use the graph in Figure 1 to answer questions 1-3:

1. Write down the  $y$ -intercept for line A.
2. Write down the gradient of line B.
3. Write down the coordinates of the point where lines A and B intersect.

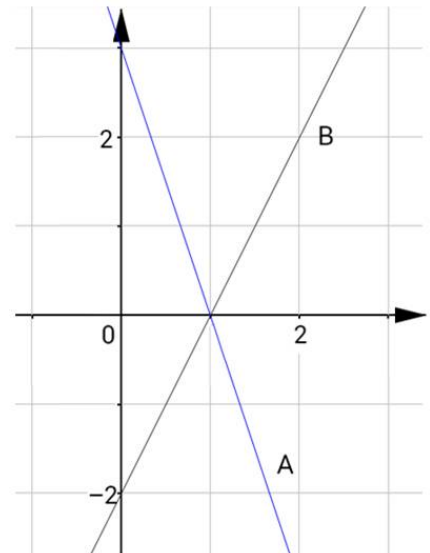
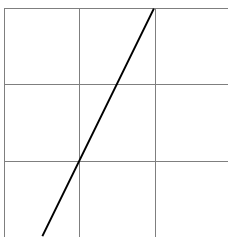


Figure 1

4. Write down the gradient of the graph of  $y = 7x - 2$ .
5.  $y = ax + b$  passes through  $(0, 4)$ .  
The line has a gradient of 3.  
Write down the value of  $a$  and the value of  $b$ .
6. The equation of line L is  $y = 5x - 2$ .  
Show that line L will pass through the point  $(20, 98)$ .
7. Line G passes through the points  $(1, 7)$  and  $(3, 11)$ .  
Show that the  $y$ -intercept is 5.
8. Show that the line connecting  $(1, 9)$  with  $(3, 13)$  and the line connecting  $(2, 3)$  with  $(5, 9)$  make up two sides of a trapezium.
9. This diagram shows part of the graph of a straight line.  
Each square has side length 1 unit.



The line crosses the  $y$ -axis at  $-14$   
Find the  $x$ -coordinate when  $y = 1$ .

10. A right-angled triangle has coordinates  $(0, 3)$ ,  $(5, 3)$  and  $(5, 23)$ . Find the equations of the three lines that pass through the vertices.



# GCSE (9-1) MATHEMATICS

## Extension

A set of straight lines pass through  $(0, 0)$  and  $(t, t + 2)$ .

- Investigate the gradient for different values of  $t$ .
- Find, in terms of  $t$ , the equation of all possible lines in the form  $y = mx + c$ .

Other sets of straight lines will pass through the points  $(0, a)$  and  $(t, t + 2)$ .

- Investigate the equation of these lines for different values of  $a$  and  $t$ .
- Find, in terms of  $a$  and  $t$ , the equation of all possible lines in the form  $y = mx + c$ .



# GCSE (9-1) MATHEMATICS

## Answers

- 3
- 2
- (1, 0)
- 7
- Equation is  $y = 3x + 4$  so  $a = 3$ ,  $b = 4$ .
- Using  $x = 20$  gives  $y = 5 \times 20 - 2 = 98$  oe.
- Gradient is  $\frac{(11-7)}{(3-1)} = 2$ , so  $y = 2x + c$ . Substituting one of the coordinates and solving gives  $c = 5$ .
- Show that each pair of points gives a line with gradient 2. Lines with the same gradient are parallel lines which could form the opposite sides of a trapezium.
- $m = 2$  and  $c = -14$  therefore  $y = 2x - 14$ . When  $y = 1$ ,  $x = 7.5$ .
- $y = 3$ ,  $x = 5$  and  $y = 4x + 3$

## Extension

Gradient =  $\frac{t+2}{t}$ ,  $y$ -intercept is 0 so equation is  $y = \frac{t+2}{t}x$ .

Gradient =  $\frac{t+2-a}{t}$ ,  $y$ -intercept is  $a$  so equation is  $y = \frac{t+2-a}{t}x + a$ .



We'd like to know your view on the resources we produce. By clicking on the 'Like' or 'Dislike' button you can help us to ensure that our resources work for you. When the email template pops up please add additional comments if you wish and then just click 'Send'. Thank you.

### OCR Resources: the small print

OCR's resources are provided to support the teaching of OCR specifications, but in no way constitute an endorsed teaching method that is required by the Board, and the decision to use them lies with the individual teacher. Whilst every effort is made to ensure the accuracy of the content, OCR cannot be held responsible for any errors or omissions within these resources. We update our resources on a regular basis, so please check the OCR website to ensure you have the most up to date version.

© OCR 2015 - This resource may be freely copied and distributed, as long as the OCR logo and this message remain intact and OCR is acknowledged as the originator of this work.

OCR acknowledges the use of the following content: Maths and English icons: Air0ne/Shutterstock.com



Assessment Objective	Qu.	Topic	R	A	G
AO1	1	Find the $y$ -intercept of a line from a graph.			
AO1	2	Find the gradient of a line from a graph.			
AO1	3	Find the coordinates of the point where lines cross.			
AO1	4	Find the gradient from the equation of a line in the form $y = mx + c$ .			
AO1	5	Interpret the gradient and $y$ -intercept of an equation in the form $y = mx + c$ .			
AO2	6	Show that a point satisfies an equation.			
AO2	7	Understand that the $y$ -intercept is where $x = 0$ .			
AO2	8	Calculate gradient.			
AO3	9	Interpret the gradient and $y$ -intercept to determine coordinates on a line.			
AO3	10	Find equations of lines.			

Assessment Objective	Qu.	Topic	R	A	G
AO1	1	Find the $y$ -intercept of a line from a graph.			
AO1	2	Find the gradient of a line from a graph.			
AO1	3	Find the coordinates of the point where lines cross.			
AO1	4	Find the gradient from the equation of a line in the form $y = mx + c$ .			
AO1	5	Interpret the gradient and $y$ -intercept of an equation in the form $y = mx + c$ .			
AO2	6	Show that a point satisfies an equation.			
AO2	7	Understand that the $y$ -intercept is where $x = 0$ .			
AO2	8	Calculate gradient.			
AO3	9	Interpret the gradient and $y$ -intercept to determine coordinates on a line.			
AO3	10	Find equations of lines.			

Assessment Objective	Qu.	Topic	R	A	G
AO1	1	Find the $y$ -intercept of a line from a graph.			
AO1	2	Find the gradient of a line from a graph.			
AO1	3	Find the coordinates of the point where lines cross.			
AO1	4	Find the gradient from the equation of a line in the form $y = mx + c$ .			
AO1	5	Interpret the gradient and $y$ -intercept of an equation in the form $y = mx + c$ .			
AO2	6	Show that a point satisfies an equation.			
AO2	7	Understand that the $y$ -intercept is where $x = 0$ .			
AO2	8	Calculate gradient.			
AO3	9	Interpret the gradient and $y$ -intercept to determine coordinates on a line.			
AO3	10	Find equations of lines.			

Assessment Objective	Qu.	Topic	R	A	G
AO1	1	Find the $y$ -intercept of a line from a graph.			
AO1	2	Find the gradient of a line from a graph.			
AO1	3	Find the coordinates of the point where lines cross.			
AO1	4	Find the gradient from the equation of a line in the form $y = mx + c$ .			
AO1	5	Interpret the gradient and $y$ -intercept of an equation in the form $y = mx + c$ .			
AO2	6	Show that a point satisfies an equation.			
AO2	7	Understand that the $y$ -intercept is where $x = 0$ .			
AO2	8	Calculate gradient.			
AO3	9	Interpret the gradient and $y$ -intercept to determine coordinates on a line.			
AO3	10	Find equations of lines.			

